

DESCRIPTION OF PARTS

Flexible LED-stripe 10W/m, 24Vdc, IP68 (cast in silicone), backside with 3M adhesive tape, temperature-resistant max. 65°/min. -20°, dimmable, minimum bending radius 30 mm, with connection leads terminated on one side
Installation: external 24V power supply required

TECHNICAL DATA

CCT 4000: FLEXYCIP-320NW
CCT 3000: FLEXYCIP-320WW
CCT 2700: FLEXYCIP-320SW
IP68 (cast in silicone)



320 LED/m, 50 segments à 32 LED | Trimmable after each segment
CRI>90
Dimmable
L5000*B10*H6mm

LAMP

CSP-LED
The LED light agent cannot be replaced.



Protection class III



Notification of Risks



CE label



Safety Instructions



The product can be used in interiors and exteriors.



Cleaning Instructions



The product may not be disposed of in the household garbage.



Don't look directly into the LED! The LED is that bright that it might damage your eyes!



Installation only by qualified and authorised persons.



ESD protection component



Do not expose product to heat source



Not recommended for children under 3 years



DALI dimmable

DISPOSAL

The packaging consists of environmentally friendly materials. Dispose of them in the local recycling containers.



Do not dispose of this product in the household garbage when it has reached the end of its lifecycle, but rather take it to a disposal center. Your local officials will provide you with information about collection offices and their business hours.

SAFETY



READ THE INSTRUCTIONS BEFORE USING THIS PRODUCT.
KEEP THE SAFETY AND OPERATING INSTRUCTIONS FOR FUTURE USE.

SAFETY INFORMATION

IP68

- The light can be used in interiors.
- Before mounting, the intended splice must be thoroughly cleaned (free from dust, oil and grease layers).
- Assembly only on suitable carrier material, for example Aluminum regarding heat conduction as well as reliable adhesion of the adhesion foil.



- Don't install under power.
- Follow the instruction manual for installation.
- Installation only by qualified and authorised persons.
- Do not use the product when it has been damaged (defective covers) or there are operational faults such as flickering, smoking, steaming, crackling noises or the smell of smoke.
- A damaged or defective product must be changed or repaired by the manufacturer, a service person or a comparable qualified person.
- Installation only under observance of the valid guidelines specific to application and country among others VDE 0.100.
- Never open one of the electrical operating agents or plug any objects into them. Such procedures signify a danger to life through electrical shock.
- Absolutely avoid contact between the product and water or other liquids. For reasons of electrical safety, the light may not be placed in contact with water or other liquids or submerged in water.
- The product may not be changed or modified.
- In operation or after extended periods of operation, avoid touching the external surface of the LED luminaire, there is a danger of high temperatures that can cause burns.
- Do not use the LED luminaire in areas with explosive or chemical aggressive atmosphere or reduced ventilation.
- The warranty claim and guarantee is rendered invalid in the event of damage to the product, which is caused by not following the operating instructions. We are not liable for the consequent damage. Because of specific characteristics of LED's (life, deviation in colour etc.) we formulated special terms for planning and installing our LED products. They are part of these installation manual! Should they not be available, request them please!
- Don't look directly into the LED! The LED is that bright that it might damage your eyes!



MAINTENANCE AND CLEANING

The LED light agent cannot be replaced.

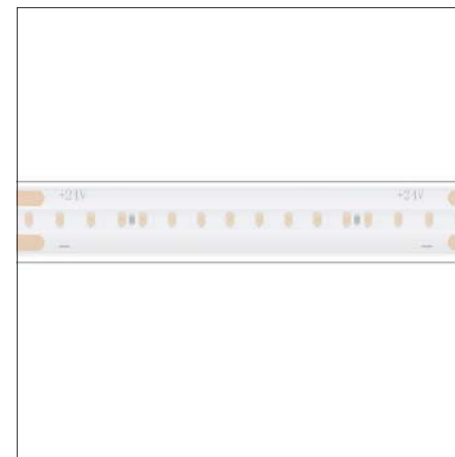


- Do not use solvents, such as benzene and similar agents. The light would be damaged thereby.
- Only use a dry, lint-free cloth for cleaning the product.

FLEXYCIP 320

Flexible LED-stripe

FLEXYCIP-320NW
FLEXYCIP-320WW
FLEXYCIP-320SW



INTENDED USAGE

This product will only serve the purpose of illumination.
The LED-stripe can be used in interiors.

SCOPE OF DELIVERY

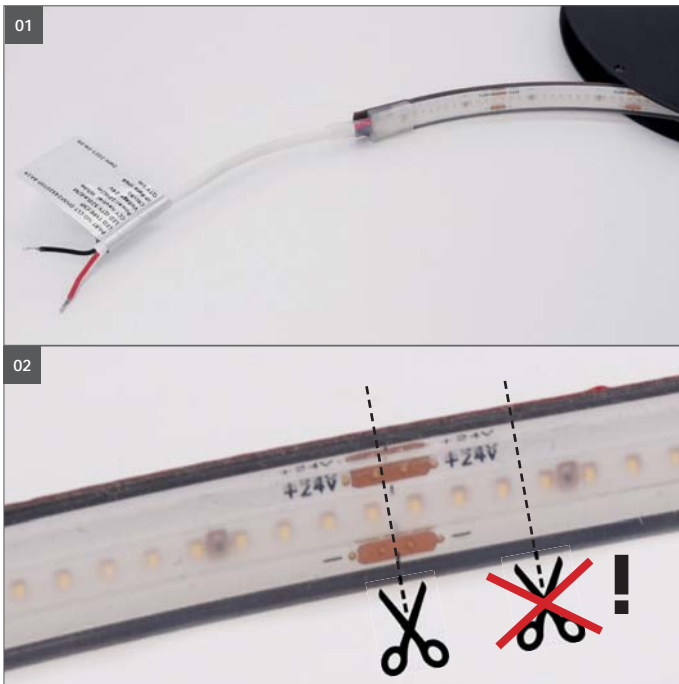
1 x FLEXYCIP 320
1 x set of instructions for assembly, operation and safety

TECHNICAL CHANGES

Changes in the sense of technical progress can be made without prior notice.

address | contact

A.L.S. GmbH
Mastorter Str. 31 | 88069 Tettnang (Germany)
Tel.: +49 (0) 75 42 93 44-0 | Fax.: +49 (0) 75 42 93 44-30
E-Mail: info@als.de | Web: www.als.de



Assembly instructions



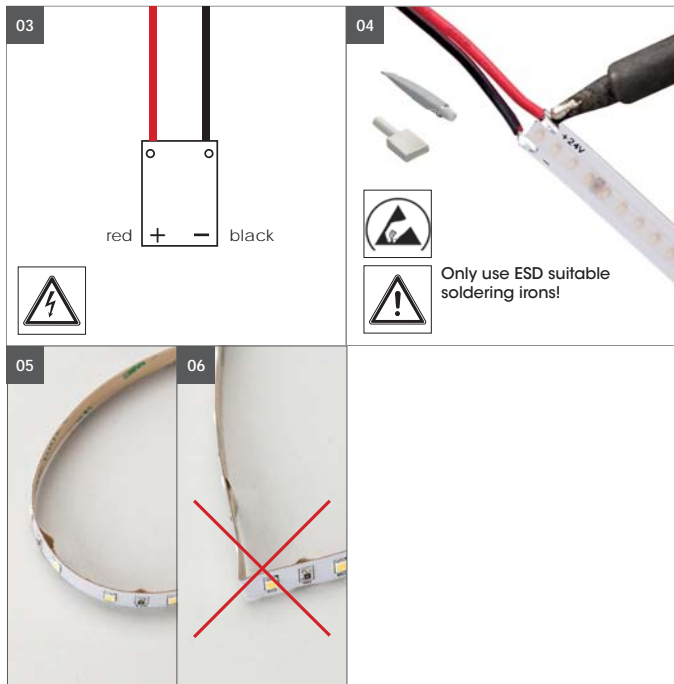
Turn Off power supply before starting any installation.
Do not connect the device under power.

Another installation / assembly / materials / types than provided in the manual sheets, release us from any electrotechnical and electrostatic responsibility.

It is recommended that these products are installed by a qualified electrician.

01. Only install on a suitable base (aluminium - thermal management, grip). When using accessories for LED light strips in connection with aluminium rails, pay attention to the construction width! E.g. connectors etc.

02. Can be cut to length **only at certain points!**



03. Power supply 24V DC
red = plus (+) / black = ground (-).

Do not wire the wrong way! Connect the module only with a suitable LED-power supply 24V DC constant voltage and enough power.

04. A feed line can be soldered to the remainder module.

05. Minimum radius of bending 3 cm.

06. Do not bend, bending will damage the conductors.



Accessory kit:

- 1 x Glue
- 20 x Screw
- 5 x Endcap (no hole)
- 5 x Endcap (with cable entry)
- 10 x Clip

