

DESCRIPTION OF PARTS

LED FLEX-MODUL, Length 5m, 7,2W/m
1400 LED/roll (280 LED/m)

Backing with 3M self-adhesive. Every 25mm cuttable, cutting line on dark dots. Accessories: 1x Tube silicone glue, 10x mounting clips incl. 20x screws, 5x end cap, 5x end cap with hole for feeder/connector.

TECHNICAL DATA

FLEXY, LED-FLEX-MODUL, L5m with 1400 LED (280 LED/m)
7,2W/m, CRI>90, 24VDC, 2220 SMD LED, with
3M self-adhesive backing, incl. accessories, IP67

Dimensions (sketch overleaf):
Without end cap: W12xH3,5 mm
With end cap: W13xH5,5 mm

Color temperature:
FLEXYIP10-1400WWN: 3000K
FLEXYIP10-1400SWN: 2700K



LAMP

SMD-LED
The LED light agent cannot be replaced.



Protection class III



Notification of Risks



CE label



Safety Instructions



The light can be used in interiors and exteriors.



Cleaning Instructions



The product may not be disposed of in the household garbage.



Don't look directly into the LED! The LED is that bright that it might damage your eyes!



Installation only by qualified and authorised persons.



Not recommended for children under 3 years



ESD protection component



Produkt nicht dem Sonnenlicht aussetzen

DISPOSAL

The packaging consists of environmentally friendly materials. Dispose of them in the local recycling containers.



Do not dispose of this product in the household garbage when it has reached the end of its lifecycle, but rather take it to a disposal center. Your local officials will provide you with information about collection offices and their business hours.

SAFETY



READ THE INSTRUCTIONS BEFORE USING THIS PRODUCT.
KEEP THE SAFETY AND OPERATING INSTRUCTIONS FOR FUTURE USE.

SAFETY INFORMATION

IP67

- The flexy stripe is suitable for indoor and outdoor use.
- Before mounting, the intended splice must be thoroughly cleaned (free from dust, oil and grease layers).
- Assembly only on suitable carrier material, for example Aluminum regarding heat conduction as well as reliable adhesion of the adhesion foil.



- Don't install under power.
- Follow the instruction manual for installation.
- Installation only by qualified and authorised persons.
- Do not use the product when it has been damaged (defective covers) or there are operational faults such as flickering, smoking, steaming, crackling noises or the smell of smoke.
- A damaged or defective product must be changed or repaired by the manufacturer, a service person or a comparable qualified person.
- Installation only under observance of the valid guidelines specific to application and country among others VDE 0.100.
- Never open one of the electrical operating agents or plug any objects into them. Such procedures signify a danger to life through electrical shock.
- Avoid contact of the product with liquids such as strong detergents and oily substances.
- The product may not be changed or modified.
- Keep the product and its components out of the reach of children. There is a risk of small parts being swallowed. Risk of injury for children! If children or persons who can not assess the dangers use the LED control, there is a risk of injury!
- The warranty claim and guarantee is rendered invalid in the event of damage to the product, which is caused by not following the operating instructions. We are not liable for the consequent damage. Because of specific characteristics of LED's (life, deviation in colour etc.) we formulated special terms for planning and installing our LED products. They are part of these installation manual! Should they not be available, request them please!



- Don't look directly into the LED! The LED is that bright that it might damage your eyes!
- Storage temperature -40+80°C
- Processing temperature: +10°C (glue), do not install below 0°C or bend the LED band.
- Operating temperature in operation: -25+60°C



MAINTENANCE AND CLEANING

The LED light agent cannot be replaced.



- Do not use solvents, such as benzene and similar agents. The flexy stripe would be damaged thereby.
- Only use a dry, lint-free cloth for cleaning the product.

FLEXYIP10

Flexible LED-stripe

FLEXYIP10-1400WWN
FLEXYIP10-1400SWN



INTENDED USAGE

This product will only serve the purpose of illumination. The LED-stripe can be used indoor and outdoor.

SCOPE OF DELIVERY

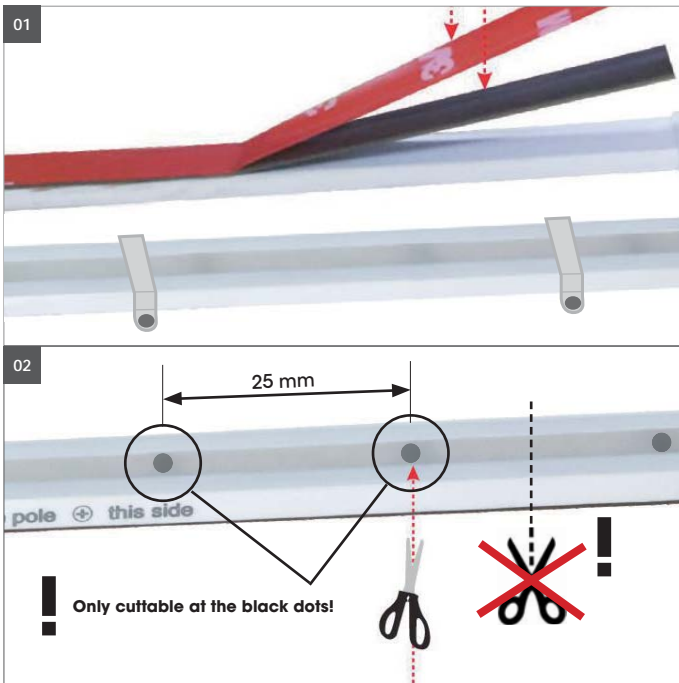
1 x ESD packaging, content, flexy stripe 5m
1 x set of instructions for assembly, operation and safety

TECHNICAL CHANGES

Changes in the sense of technical progress can be made without prior notice.

address | contact

A.L.S. GmbH
Mastorter Str. 31 | 88069 Tettnang (Germany)
Tel.: +49 (0) 75 42 93 44-0 | Fax.: +49 (0) 75 42 93 44-30
E-Mail: info@als.de | Web: www.als.de



Assembly instructions



Turn Off power supply before starting any installation.
Do not connect the device under power.

Another installation / assembly / materials / types than provided in the manual sheets, release us from any electrotechnical and electrostatic responsibility.

It is recommended that this product is installed by a qualified electrician.

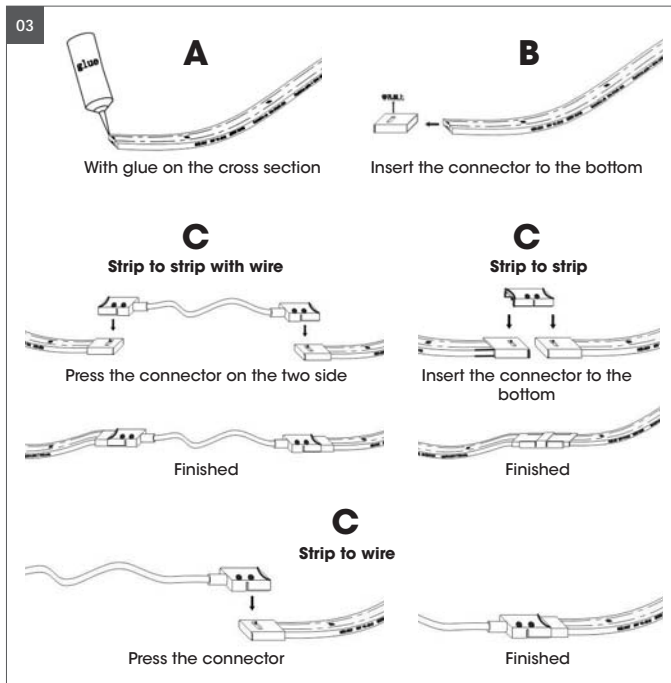
The intended mounting surface must be stable. The LED FLEXY must not be mounted on sharp edges.

01. The LED FLEXY can be glued on (3M adhesive tape on the back) or fixed with mounting clips. It must not be processed with mounting adhesive. Do not apply too much pressure on the LED components during installation!

02. The LED FLEXY can only be shortened and/or repositioned (every 25 mm) at the contact points (dark spots, see picture). Never cut between the LED components, this section will be destroyed. Do not mount the LED FLEXY in a right angle (see picture 05) around edges, do not use tight radii and/or bend, twist.

Only use suitable 24V DC LED converters

The LED NEON LIGHT FLEXY can be dimmed via a light control module (TRL-OTDIM 1-10V or TRL-OTDALI dimmable via DALI, CASAMBI Bluetooth CAS-L1K). Note total output.



03. Close the end with the cap and silicone glue.

Avoid excessive pressure on the LEDs and resistors during assembly. Do not use additional sharp adhesives such as superglue. This destroys the shell of the LED FLEXY. Double-sided foam tape can not be used for assembly as the LED FLEXY back is made of a silicone sleeve. The adhesive of the assembly tape finds no support. The LED FLEXY can thus detach and fall down.

The flexy tape must not be exposed to additional heat sources.

04. Use the mounting clips and connection caps provided in the accessories.

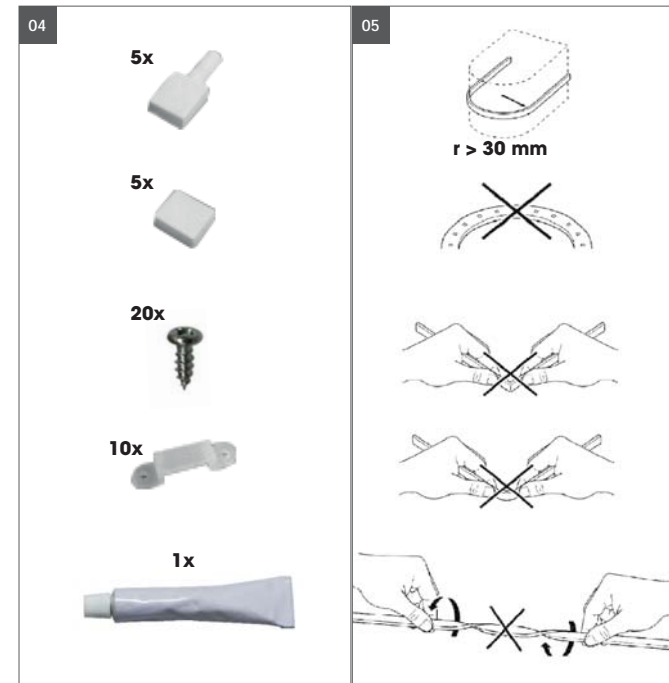
Connections / Commissioning

Do not connect live!
+24V from converter

Use only lead-free solder and suitable soldering stations for soldering. Pay attention to the soldering temperature. Take precautions according to the ESD regulations.

Pay attention to the polarity of the LED strips during installation. If the polarity is wrong, there is no function and the LED strip can be destroyed! When extending the NEON LIGHT FLEXY LED, pay attention to the overall performance.

The LED output from the LED converter must not be overloaded, charge 10% reserve.



04. Minimum radius of bending 30 mm.

Do not bend, bending will damage the conductors. Do not install below 0°C or bend the LED band.



Matching controller for FLEXYIP10-1400xx (72W/5m roll)	
TRL-OTDALI (outdoor only with IP-Box)	X max 120W
TRL-OTDIM (1-10V, outdoor only with IP-Box)	X max 120W
CAS-L1K (outdoor only with IP-Box)	X max 144W
TRL-150W24IP	X max 150W

