

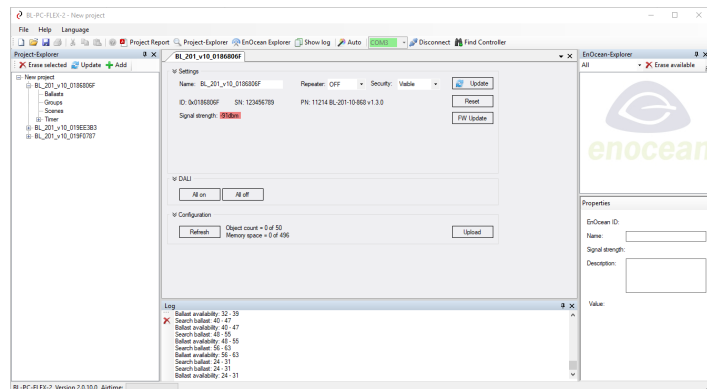
## BL-202-FLEX-2 Starter-Kit

Everything you need for a quick start with the „FLEX“ light controller family

Part nr.: 11664

Interfaces:

1x DALI Master, 1x EnOcean Master bidirectional, supply voltage: 230 V AC



The **BL-202-FLEX-2 Starter-Kit** allows you a very fast and affordable start into the practical work with our free configurable FLEX options of the BL-201 EnOcean-DALI-controller series / light control systems.

The kit includes the following items (see picture above):

- **BL-202-10-868 EVG FLEX, EnOcean-DALI-Controller, #11329, 1 pc**
- **BL-PC-FLEX-2, PC-Software, Windows, USB-Stick, #11228, 1 pc**
- **Wireless light switch, pure white, EnOcean, #11051, 1 pc**
- **EnOcean WUB-Stick 868 MHz, #11227, 1 pc**
- **Slotted screw driver 0.4 x 2.0, #11145, 1 pc**
- **Power cord, Euro power plug, 2,0 m, #11230, 1 pc**

Everything you need to start with our FLEX light controller family is included in this kit, except a luminaire or driver + LED with a DALI interface.

## Technical data

### Interfaces

Type	DALI Master
Number	1
Output current	Max. 30 mA (15 ballasts)
Output voltage	Typ. 16V DC (+/- 5%)
Galvanic isolation	Yes

Type	EnOcean
Number	1
Transmit / Receive frequency	868.0 MHz / ASK
Occupied frequency band	868.0 – 868.6 MHz
Maximum transmission power	Typ. 3 dBm @ 868.300 MHz
EN 300200 receiver category	2

### User interfaces

Service button	Yes, 1, at the front
Service LED	1x, red

### Housing / connectors

Connection technology	Spring clip, push-in, max. 1.5mm <sup>2</sup> inflexible, max. 1.0mm <sup>2</sup> flexible with cable end sleeves
Housing	UL-V0, light grey

### Power supply

Supply voltage	230 V AC
Power consumption	Typ. 0,8 W, max 1,5 W

### Environmental conditions

Operating temperature	+5°..+50°C
Storage temperature	-20°..+70°C
Humidity	10..95% rel. Humidity, non-condensing
Protection class	IP20

### Dimensions and weight

Weight	55g
Dimensions	148 x 21 x 19 mm

### Standards / approvals

CE	2014/53/EU RED directive 2011/65/EU RoHS directive
Approvals / tests	EN 60950-1:2006 + A11:2009 + A1:2010 + A12:2011 + AC:2011 + A2:2013 ETSI EG 203 367 DIN/EN 55032 EN/IEC 61000-4-2 EN/IEC 61000-4-3 EN/IEC 61000-4-4 EN/IEC 61000-4-5 EN/IEC 61000-4-6

---

**Table of supported EEP (EnOcean Equipment Profile) (08.04.2020)**

---

Cons. nr.	EEP	Description
1	F6-02-01	Light and Blind Control - Application Style 1
2	F6-02-02	Light and Blind Control - Application Style 2
3	F6-02-03	Light Control - Application Style 1
4	A5-07-01	Occupancy with Supply voltage monitor
5	A5-07-02	Occupancy with Supply voltage monitor
6	A5-07-03	Occupancy with Supply voltage monitor and 10-bit illumination measurement
7	A5-06-01	Light Sensor, range 300lx to 60.000lx
8	A5-06-02	Ligth sensor, range 0lx to 1.020lx
9	A5-08-01	Range 0lx to 510lx, 0°C to +51°C and Occupancy Button

---

**Short description**

---

**PC-Software BL-PC-FLEX-2, communication via EnOcean USB-Stick**

To work with the BL-202-10-868 EVG FLEX it is necessary to install and use the PC-software on a PC. Any communication with the gateway is done wireless via the EnOcean USB stick.

**DALI configuration**

The whole DALI configuration and many service functions of the DALI ballasts connected to the BL-202-10-868 EVG FLEX is done wireless via the EnOcean USB stick.

**Connect EnOcean to DALI**

A basic functionality of the FLEX light controllers is that you can setup nearly any assignment between EnOcean switches / sensors and DALI ballasts / drivers very easily. You simply setup a function by using drop-down-lists for the available light switches and functions, light ON, OFF, DIM, invoke a scene, start a timer and many more. Please see the software manual for the complete functional range.

**Online diagnostics and system start-up**

During the start-up, every parameter you edit on your PC will be send immediatly wireless to the BL-202-10-868 EVG FLEX Controller. You can easily assign DALI addresses, change DALI addresses by Drag & Drop, activate a „blink“ function to figure out which DALI address belongs to a luminary etc..

With quick access buttons in the software, you can switch groups and invoke scenes, to check your configuration very fast and easy to use. Please check the users manual for the complete functional range.

For further, complete information, please see the software manual, which you can download on our website.

**In case of any question, please do not hesitate to contact us by E-Mail or phone.**

---

**Ordering information for the BL-202-FLEX-2 Starter-Kit**

Article text	Part number	Description
BL-202-FLEX-2 Starter-Kit	11664	<p>BL-202-FLEX-2 Starter-Kit, including 1 pc of the following articles:</p> <ul style="list-style-type: none"> <li>• BL-202-10-868 EVG FLEX, EnOcean-DALI-Controller, part nr.11329</li> <li>• BL-PC-FLEX-2 PC-Software, Windows, USB-Stick, part nr. 11228</li> <li>• Wireless light switch pure white EnOcean, part nr. 11051</li> <li>• EnOcean USB-Stick, part nr. 11227</li> <li>• Slotted screw driver 0.4 x 2.0, part nr. 11145</li> <li>• Power cord, Euro power plug, 2,0m , part nr. 11230</li> </ul>

**Note:**

**Only one #11664 per customer / delivery address can be ordered!**

## EU Declaration of Conformity

Hereby the DEUTA Controls GmbH declares that the radio equipment type **BL-202-FLEX-2 STARTERKIT** is compliant with the directive 2014/53/EU. You can download the complete EU Declaration of Conformity as a pdf-document on our homepage [www.deuta-controls.de](http://www.deuta-controls.de) in the area Service/Downloads (Doc. EUDC2020\_156).

Version 20, 14.04.2020