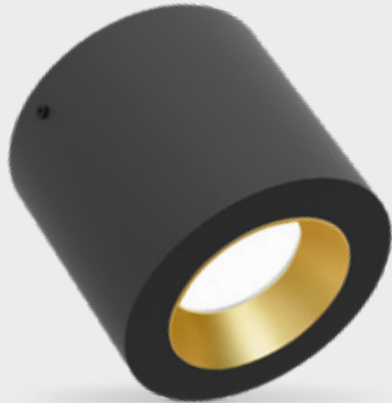
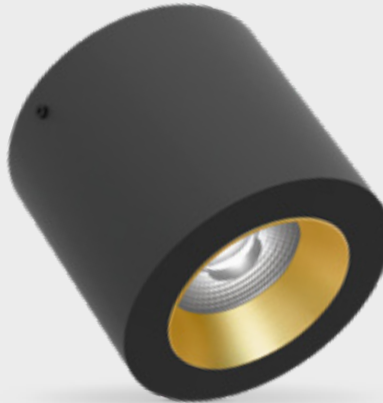


FEATURES

- Reliable solution without power supply
- Smooth flicker-free dimming to 0,1%
- Practically no inrush current
- Warm dim version available



HV-FD 80°



HV-FD 40°

COLOURS

Available colours:



| Housing | Inside ring |
|------------|----------------|
| RAL 9016 | |
| Matt white | Gold (XX=61) |
| Matt white | Silver (XX=63) |
| Matt white | Copper (XX=64) |
| Matt white | Black (XX=62) |



| Housing | Inside ring |
|------------|----------------|
| RAL 9005 | |
| Matt black | Gold (XX=71) |
| Matt black | Silver (XX=74) |
| Matt black | Copper (XX=75) |
| Matt black | Black (XX=72) |

Vector 100 HV-FD

Surface mounted

SPECIFICATIONS

| | |
|---|---|
| Input voltage | 220-240Vac |
| Beam angle (FWHM) | 40° / 80° |
| Fixture material | Housing: Die cast aluminium / Optic: PMMA |
| Environment | Indoor |
| IK rate | IK03 |
| Inrush current (peak / duration) | <100mA / 0 µs (soft start) |
| Max. quantity per type B 16A | 360 pcs. |
| Mains surge capability (between L - N) | 2 kV (differential mode (DM)) |
| Mains surge capability (between L/N - PE) | 4 kV (common mode (CM)) |
| % Flicker (Conform IEEE P1789 Standard) | Typical 0,4% |
| Flicker index | <0,1 |
| Dimming range | 100-1% |
| THD | 15% |
| Operating temperature (Ta) | -20°C / +45°C |
| Safety marks | EN60598 / EN62031 / EN62471 |
| EMC compliance | EN55015 |
| Colour consistency (SDCM) | MacAdam step 3 |
| Warranty | 7 years * (within the European Union and the countries of the Free Trade Association for products delivered after 1 May 2015) |
| Energy class | A |

This luminaire contains built-in LED lamps. There are no exchangeable parts inside the luminaire. EU 874/2012



IP20

VECTOR 100 220-240V



ITEM SPECIFICATIONS (PART A)

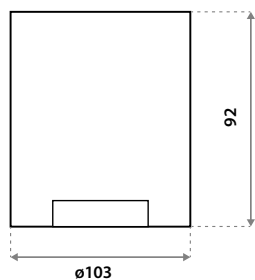
| Description | Item code | Input | W | Lm | Lm/W | CRI (typ.) | UGR | Pf |
|--|--------------|----------|------|-----|------|------------|------|------|
| Vector 100 HV-FD 2700K 600 Lm 40° Triac dim | 7B2A03XX5A02 | 220-240V | 10,5 | 600 | 57 | 93 | 23,2 | 0,99 |
| Vector 100 HV-FD 3000K 600 Lm 40° Triac dim | 7B2A03XX5C02 | 220-240V | 10,3 | 600 | 58 | 93 | 23,2 | 0,99 |
| Vector 100 HV-FD 4000K 600 Lm 40° Triac dim | 7B2A03XX5E02 | 220-240V | 10,1 | 600 | 59 | 93 | 23,2 | 0,99 |
| Vector 100 HV-FD 2200-3000K 600 Lm 40° Triac dim | 7B2A03XX5G02 | 220-240V | 10,3 | 600 | 58 | 93 | 23,2 | 0,99 |
| Vector 100 HV-FD 2700K 600 Lm 80° Triac dim | 7B2A03XX5B02 | 220-240V | 10,5 | 600 | 57 | 93 | 24,5 | 0,99 |
| Vector 100 HV-FD 3000K 600 Lm 80° Triac dim | 7B2A03XX5D02 | 220-240V | 10,3 | 600 | 58 | 93 | 24,5 | 0,99 |
| Vector 100 HV-FD 4000K 600 Lm 80° Triac dim | 7B2A03XX5F02 | 220-240V | 10,1 | 600 | 59 | 93 | 24,5 | 0,99 |
| Vector 100 HV-FD 2200-3000K 600 Lm 80° Triac dim | 7B2A03XX5H02 | 220-240V | 10,3 | 600 | 58 | 93 | 24,5 | 0,99 |

ITEM SPECIFICATIONS (PART B)

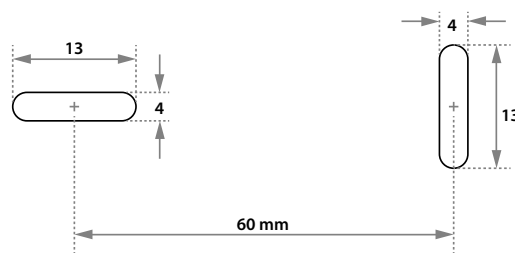
| Description | Safety class | Energy class | Weight | Dimensions single carton | Quantity per carton | Expected lifespan (25°C) | | |
|--|--------------|--------------|--------|--------------------------|---------------------|--------------------------|-------------|-------------|
| | | | | | | L70B50 | L80B50 | L90B50 |
| Vector 100 HV-FD 2700 600 Lm K 40° Triac dim | II | A | 415 gr | 105x105x105 mm | 35 pcs | >70.000 hrs | >70.000 hrs | >54.000 hrs |
| Vector 100 HV-FD 3000K 600 Lm 40° Triac dim | II | A | 415 gr | 105x105x105 mm | 35 pcs | >70.000 hrs | >70.000 hrs | >54.000 hrs |
| Vector 100 HV-FD 4000K 600 Lm 40° Triac dim | II | A | 415 gr | 105x105x105 mm | 35 pcs | >70.000 hrs | >70.000 hrs | >54.000 hrs |
| Vector 100 HV-FD 2200-3000K 600 Lm 40° Triac dim | II | A | 415 gr | 105x105x105 mm | 35 pcs | >70.000 hrs | >70.000 hrs | >54.000 hrs |
| Vector 100 HV-FD 2700K 600 Lm 80° Triac dim | II | A | 415 gr | 105x105x105 mm | 35 pcs | >70.000 hrs | >70.000 hrs | >54.000 hrs |
| Vector 100 HV-FD 3000K 600 Lm 80° Triac dim | II | A | 415 gr | 105x105x105 mm | 35 pcs | >70.000 hrs | >70.000 hrs | >54.000 hrs |
| Vector 100 HV-FD 4000K 600 Lm 80° Triac dim | II | A | 415 gr | 105x105x105 mm | 35 pcs | >70.000 hrs | >70.000 hrs | >54.000 hrs |
| Vector 100 HV-FD 2200-3000K 600 Lm 80° Triac dim | II | A | 415 gr | 105x105x105 mm | 35 pcs | >70.000 hrs | >70.000 hrs | >54.000 hrs |

All values are measured at 230V (+/- 7%)

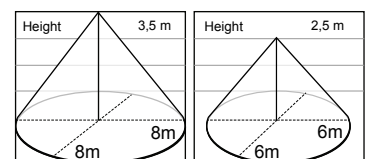
DIMENSIONS



FIXATION DIMENSIONS



DETECTION AREA



| Manufacturer | Product ID | Type | Power | Wires* | Dimming range | | | |
|--------------------|-------------------|------|--------|--------|---------------|-------|-------|-------|
| | | | | | HV-IC | | HV-FD | |
| | | | | | min % | max % | min % | max % |
| ABB | 6523U | RL | 2-100 | 2 | x | x | ✓ 1,0 | ✓ 97 |
| Busch&Jaeger | 2247U | RL | 60-500 | 2 | x | x | ✓ 0,0 | ✓ 98 |
| Busch&Jaeger | 2250U | R | 60-600 | 2 | 2,0 | 63 | ✓ 0,3 | ✓ 100 |
| Busch&Jaeger | 6514 UJ-5 | RC | 20-420 | 3 | 7,0 | ✓ 97 | 10,0 | ✓ 100 |
| Casambi | CBU-TED Bluetooth | RC | 1-100 | 3 | ✓ 0,1 | ✓ 100 | ✓ 0,1 | ✓ 100 |
| CTM Lyng | MDimLed | LED | 1-200 | 3 | ✓ 0,6 | ✓ 100 | ✓ 0,0 | ✓ 100 |
| Dimmax (Trump) | 420SL | RLC | 1-200 | 3 | 4,0 | ✓ 100 | 2,1 | ✓ 98 |
| Drespa | 814 | R | 60-400 | 2 | x | x | x | x |
| Eaton LED | CDAU-01/04 | RLC | 0-250 | 3 | 2,0 | ✓ 100 | 2,0 | ✓ 100 |
| Elko | 315GLE | RC | 20-315 | 2 | 1,5 | ✓ 95 | ✓ 0,2 | ✓ 96 |
| Elko | 400GLI | RL | 40-400 | 2 | x | x | ✓ 0,0 | ✓ 98 |
| Eltako | EUD61NPN-UC | RLC | 400 | 3 | 5,5 | ✓ 100 | 2,9 | ✓ 95 |
| Feller | 40420 | RLC | 20-420 | 2 | x | x | ✓ 0,8 | ✓ 100 |
| Feller | 402001 LED | RLC | 4-200 | 2 | 12,0 | 90 | 18,0 | ✓ 100 |
| Feller | 40300 RC | RC | 20-300 | 2 | 6,0 | ✓ 100 | 6,8 | ✓ 95 |
| Feller | 40600 RL | RL | 20-300 | 2 | ✓ 0,1 | 89 | ✓ 0,0 | ✓ 96 |
| Feller Zepitron | 3306 | UNI | 25-420 | 3 | 11,0 | 91 | 14,0 | ✓ 100 |
| Gira | 1184 00/101 | R | 60-200 | 2 | x | x | ✓ 0,2 | ✓ 97 |
| IPAS | 9240016 | RC | 35-400 | 2 | 3,0 | 79 | 4,0 | ✓ 100 |
| Ipas | HD300 | LED | 10-300 | 2 | 6,8 | 64 | 4,7 | 81 |
| Legrand | 0 02671 | LED | 3-75 | 3 | 7,4 | ✓ 96 | 6,3 | ✓ 96 |
| Legrand (Bfinico) | L-N-NT4411N | LED | 3-75 | 2 | 5,2 | 92 | 3,4 | ✓ 95 |
| Lumiko /Klemko | D-PAF-200-LED | RC | 1-200 | 2 | ✓ 0,1 | 93 | ✓ 0,0 | ✓ 98 |
| Lutron | QSNE 4 AD | RC | 0-800 | 3 | 0,0 | 0 | 0,0 | 0 |
| Merten | MTN577899 | RC | 20-315 | 2 | 12,0 | 81 | 16,0 | ✓ 100 |
| MK elements | K34100 | LED | 6-150 | 3 | x | x | x | x |
| MK elements | K34103 | LED | 35-500 | 3 | x | x | x | x |
| Niko | 310-014XX | R | 5-200 | 2 | x | x | x | x |
| Niko | 310-016 | RL | 50-400 | 2 | 6,0 | ✓ 96 | 2,0 | ✓ 99 |
| Niko | 310-017XX | RC | 20-250 | 2 | 16,0 | 78 | 22,4 | ✓ 95 |
| Niko | 310-0190X | Uni | 5-325 | 3 | ✓ 0,7 | ✓ 100 | ✓ 0,0 | ✓ 98 |
| Niko | 310-0260 | RL | 40-550 | 2 | 5,9 | 86 | 6,3 | ✓ 99 |
| Niko | 310-02701 | LED | 40-300 | 2 | 8,0 | 74 | 10,4 | ✓ 96 |
| Niko | 310-0280X | LED | 2-100 | 3 | 2,2 | ✓ 100 | 4,7 | ✓ 96 |
| Niko | 310-0390X | Uni | 3-200 | 2 | 1,5 | 92 | ✓ 0,0 | ✓ 95 |
| Niko | 330-0700 | LED | 5-350 | 3 | ✓ 0,7 | ✓ 100 | ✓ 0,1 | ✓ 100 |
| Peha | 433 | R | 20-250 | 2 | ✓ 0,1 | 92 | ✓ 0,0 | 94 |
| Qbus | Dim02SA/500 | uni | 2-500 | 3 | 2,0 | ✓ 100 | ✓ 0,1 | ✓ 100 |
| RAKO | RMT-500 | RC | 1-500 | 3 | ✓ 0,1 | ✓ 100 | ✓ 0,0 | ✓ 100 |
| RAKO | RMT-PILL | RC | 1-250 | 3 | ✓ 0,6 | ✓ 97 | ✓ 0,1 | ✓ 98 |
| Schneider (Merten) | SBD315RC | RC | 20-315 | 2 | 12,0 | ✓ 99 | 15,6 | ✓ 96 |
| Schneider (Merten) | SBD400R-1/MTN5131 | R | 40-400 | 2 | x | x | 2,5 | ✓ 98 |
| Schneider (Merten) | SBD600 RL | RL | 40-600 | 2 | x | x | ✓ 0,0 | ✓ 96 |
| Schneider (Merten) | SBD600RCRL | RLC | 20-600 | 2 | 1,3 | 92 | ✓ 0,5 | ✓ 98 |
| Schneider/Merten | MTN5171 | RLC | 10-420 | 2 | 5,8 | 80 | 8,0 | ✓ 99 |
| Schneider/Merten | SBD200/MEG 5134 | RLC | 4-400 | 2 | 12,0 | 85 | 18,0 | ✓ 100 |
| Simon Electric | DS9T2 | | 5-315 | 3 | ✓ 0,2 | ✓ 97 | ✓ 0,1 | ✓ 100 |
| Unilamp | KDT-500E | LED | 5-500 | 2 | 8,0 | 85 | 13,0 | 94 |
| Unilamp | KDT-500E2 | LED | 5-500 | 3 | 3,6 | 65 | 1,6 | 89 |
| Unilamp/Luzense | KTD-500 E4 | LED | 5-500 | 2 | 1,6 | 82 | ✓ 0,4 | ✓ 100 |

✓ = Recommended x = Not recommended Please check our website for the latest information.

* 2 = No neutral required; 3 = Neutral required.