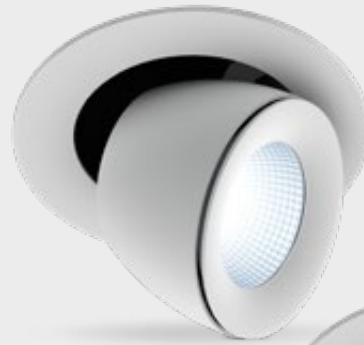
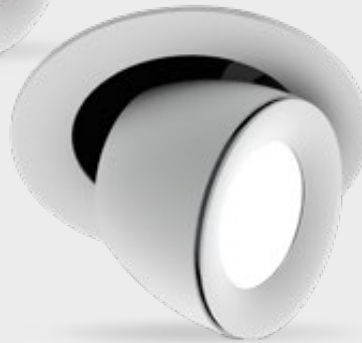


## FEATURES

- 4 different sharp beam angles
- Wide variety of TM30 optimized LEDs
- ENEC approved drivers
- IEEE P1789 Flickerfree driver to 1%



LV 18° / 37° / 60°



LV 80° (on request)

## COLOURS

Available colours:



Matt white RAL 9016 (XX=MW)  
Matt black RAL 9005 (XX=BL)

## SPRINGS

Standard with CS springs (concrete/gyproc).  
On request also available with GS springs (gyproc).

# Linea DS-A 195 LV

Adjustable

## SPECIFICATIONS

Beam angle (FWHM)	18° / 37° / 60° (80° on request)
Fixture material	Die cast aluminium
Environment	Indoor
IP rate	IP20
IK rate	IK03
Operating temperature (Ta)	-20°C / +45°C
Safety marks	EN60598 / EN62031 / EN62471
EMC compliance	EN55015
Colour consistency (SDCM)	MacAdam step 3
Warranty	7 Years
Energy class	A+

This luminaire contains built-in LED lamps. The lamps cannot be changed in the luminaire. EU 874/2012



Ask our sales department about the possibilities for:  
- Tunable white 2700-6500K.  
- Extra LED options from the LUXEON Stylist Series

IP20

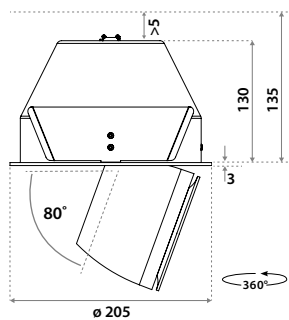
## LINEA DS-A 195 VARIATIONS

Linea DS-A 195	CRI80	3000/4000K	3000/3400Lm	incl. power supply	page 3
Linea DS-A 195	CRI80	3000/4000K	5000/5700Lm	incl. power supply	page 4
Linea DS-A 195	CRI97	3000K	2500Lm	incl. power supply	page 5
Linea DS-A 195	CRI97	3000K	3750Lm	incl. power supply	page 6

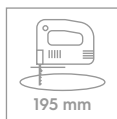
## CRI80/97 CHOOSE YOUR LV LUMEN OUTPUT

	mA	W	Lumen Output			Lumen / Watt			Driver types				
			CRI80	CRI80	CRI97	CRI80	CRI80	CRI97	No dim	Triac	1-10V&Push	Dali	Casambi
			3000K	4000K	3000K	3000K	4000K	3000K					
<i>Special request</i>	250	9,4	1200	1400	800	127	149	85	127570	x	127021	127576	x
<i>Special request</i>	350	13,2	1650	1900	1100	125	144	83	127570	x	127021	127576	127630
<i>Special request</i>	500	17,9	2250	2500	1450	125	139	81	127570	127032	127021	127576	127630
<b>Standard</b>	700	27,0	3000	3400	2150	111	126	80	127484N	122260	127021	127576	127630
<i>Special request</i>	800	32,1	3400	3750	2500	106	117	78	127484N	on request	127021	127490	127630
<i>Special request</i>	900	35,5	3700	4100	2700	104	115	76	127484N	on request	127021	127490	127630
<i>Special request</i>	1050	41,7	4200	4700	3000	101	113	72	127484N	on request	127021	127490	127630
<b>Standard</b>	1200	50,5	5000	5700	3250	99	113	64	127690	on request	123170	123170	On request
<b>Special request</b>	1400	57,2	5600	6300	3750	98	110	66	127310	on request	123170	123170	On request

## DIMENSIONS



## HOLE SIZE



### Using CS (concrete) springs (concrete/gyproc)

For 5-135 mm ceiling thickness and recess depth 135 mm (incl. 5mm space for air ventilation).  
For plasterboard ceilings or similar harder materials.

### Using GS (gyproc) springs

For 8-135 mm ceiling thickness and recess depth 135 mm (incl. 5mm space for air ventilation).  
For plasterboard ceilings or similar harder materials.

For soft ceiling tiles, we recommend using a wooden plate on the reverse side of the tile.

## LINEA DS-A 195 LV

**CRI80 3000/3400LM**

### ITEM SPECIFICATIONS (PART A)

Description	18°		37°		60°		Type	mA	Vf
	Item code	UGR	Item code	UGR	Item code	UGR			
Linea DS-A LV 3000 Lm 3000K CRI80 No dim	130603XXCA02	18.0	130603XXCB02	17.4	130603XXCC02	20.5	Incl. PSU	700	35,3
Linea DS-A LV 3000 Lm 3000K CRI80 1-10V & Push	130603XXNA02	18.0	130603XXNB02	17.4	130603XXNC02	20.5	Incl. PSU	700	35,3
Linea DS-A LV 3000 Lm 3000K CRI80 Dali	130603XXPA02	18.0	130603XXPB02	17.4	130603XXPC02	20.5	Incl. PSU	700	35,3
Linea DS-A LV 3400 Lm 4000K CRI80 No dim	130603XXCD02	18.4	130603XXCE02	17.9	130603XXCF02	20.9	Incl. PSU	700	35,3
Linea DS-A LV 3400 Lm 4000K CRI80 1-10V & Push	130603XXND02	18.4	130603XXNE02	17.9	130603XXNF02	20.9	Incl. PSU	700	35,3
Linea DS-A LV 3400 Lm 4000K CRI80 Dali	130603XXPD02	18.4	130603XXPE02	17.9	130603XXPF02	20.9	Incl. PSU	700	35,3

### ITEM SPECIFICATIONS (PART B)

Description	W	Lm	Lm/W	CRI (typ.)	Pf	Ripple	Inrush current	B-16A Fuse	Safety class	Energy class
Linea DS-A LV 3000 Lm 3000K CRI80 No dim	27,0	3000	111	82	0.95	<3%	5A 50µS	50 pcs	I	A+
Linea DS-A LV 3000 Lm 3000K CRI80 1-10V & Push	27,0	3000	111	82	0.95	<3%	5A 50µS	50 pcs	II	A+
Linea DS-A LV 3000 Lm 3000K CRI80 Dali	27,0	3000	111	82	0.95	<3%	5A 50µS	50 pcs	II	A+
Linea DS-A LV 3400 Lm 4000K CRI80 No dim	27,0	3400	126	82	0.95	<3%	5A 50µS	50 pcs	I	A+
Linea DS-A LV 3400 Lm 4000K CRI80 1-10V & Push	27,0	3400	126	82	0.95	<3%	5A 50µS	50 pcs	II	A+
Linea DS-A LV 3400 Lm 4000K CRI80 Dali	27,0	3400	126	82	0.95	<3%	5A 50µS	50 pcs	II	A+

### ITEM SPECIFICATIONS (PART C)

Description	Weight	Dimensions single carton	Quantity per carton	Expected lifespan (25°C)		
				L70B50	L80B50	L90B50
Linea DS-A LV CRI80	2094 gr	210x210x140 mm	6 pcs	165.000 hrs	105.000 hrs	51.000 hrs

All values are measured at 230V (+/- 7%)

## LINEA DS-A 195 LV

**CRI80 5000/5700LM**

### ITEM SPECIFICATIONS (PART A)

Description	18°		37°		60°		Type	mA	Vf
	Item code	UGR	Item code	UGR	Item code	UGR			
Linea DS-A LV 5000 Lm 3000K CRI80 No dim	130603XXCR02	19.7	130603XXCS02	19.2	130603XXCT02	22.2	Incl. PSU	1200	37,5
Linea DS-A LV 5000 Lm 3000K CRI80 1-10V & Push	130603XXNK02	19.7	130603XXNL02	19.2	130603XXNM02	22.2	Incl. PSU	1200	37,5
Linea DS-A LV 5000 Lm 3000K CRI80 Dali	130603XXPK02	19.7	130603XXPL02	19.2	130603XXPM02	22.2	Incl. PSU	1200	37,5
Linea DS-A LV 5700 Lm 4000K CRI80 No dim	130603XXCU02	20.2	130603XXCV02	19.7	130603XXCW02	22.7	Incl. PSU	1200	37,5
Linea DS-A LV 5700 Lm 4000K CRI80 1-10V & Push	130603XXNN02	20.2	130603XXNP02	19.7	130603XXNQ02	22.7	Incl. PSU	1200	37,5
Linea DS-A LV 5700 Lm 4000K CRI80 Dali	130603XXPN02	20.2	130603XXPP02	19.7	130603XXPQ02	22.7	Incl. PSU	1200	37,5

### ITEM SPECIFICATIONS (PART B)

Description	W	Lm	Lm/W	CRI (typ.)	Pf	Ripple	Inrush current	B-16A Fuse	Safety class	Energy class
Linea DS-A LV 5000 Lm 3000K CRI80 No dim	50,5	5000	99	82	0.95	<3%	10A 200µS	30 pcs	II	A+
Linea DS-A LV 5000 Lm 3000K CRI80 1-10V & Push	50,5	5000	99	82	0.95	<3%	10A 200µS	30 pcs	I	A+
Linea DS-A LV 5000 Lm 3000K CRI80 Dali	50,5	5000	99	82	0.95	<3%	10A 200µS	30 pcs	I	A+
Linea DS-A LV 5700 Lm 4000K CRI80 No dim	50,5	5700	113	82	0.95	<3%	10A 200µS	30 pcs	II	A+
Linea DS-A LV 5700 Lm 4000K CRI80 1-10V & Push	50,5	5700	113	82	0.95	<3%	10A 200µS	30 pcs	I	A+
Linea DS-A LV 5700 Lm 4000K CRI80 Dali	50,5	5700	113	82	0.95	<3%	10A 200µS	30 pcs	I	A+

### ITEM SPECIFICATIONS (PART C)

Description	Weight	Dimensions single carton	Quantity per carton	Expected lifespan (25°C)		
				L70B50	L80B50	L90B50
Linea DS-A LV CRI80	2094 gr	210x210x140 mm	6 pcs	165.000 hrs	105.000 hrs	51.000 hrs

All values are measured at 230V (+/- 7%)

## LINEA DS-A 195 LV

**CRI97 2500LM**

### ITEM SPECIFICATIONS (PART A)

Description	18°		37°		60°		Type	mA	Vf
	Item code	UGR	Item code	UGR	Item code	UGR			
Linea DS-A LV 2500 Lm 3000K CRI97 No dim	130603XXCG02	17.3	130603XXCH02	16.8	130603XXCJ02	19.8	Incl. PSU	800	35,3
Linea DS-A LV 2500 Lm 3000K CRI97 1-10V & Push	130603XXNG02	17.3	130603XXNH02	16.8	130603XXNJ02	19.8	Incl. PSU	800	35,3
Linea DS-A LV 2500 Lm 3000K CRI97 Dali	130603XXPG02	17.3	130603XXPH02	16.8	130603XXPJ02	19.8	Incl. PSU	800	35,3

### ITEM SPECIFICATIONS (PART B)

Description	W	Lm	Lm/W	CRI (typ.)	Pf	Ripple	Inrush current	B-16A Fuse	Safety class	Energy class
Linea DS-A LV 2500 Lm 3000K CRI97 No dim	32,1	2500	78	97	0.95	<3%	5A 50µS	50 pcs	I	A+
Linea DS-A LV 2500 Lm 3000K CRI97 1-10V & Push	32,1	2500	78	97	0.95	<3%	5A 50µS	50 pcs	II	A+
Linea DS-A LV 2500 Lm 3000K CRI97 Dali	32,1	2500	78	97	0.95	<3%	5A 50µS	50 pcs	II	A+

### ITEM SPECIFICATIONS (PART C)

Description	Weight	Dimensions single carton	Quantity per carton	Expected lifespan (25°C)		
				L70B50	L80B50	L90B50
Linea DS-A LV 2500 Lm 3000K CRI97	2094 gr	210x210x140 mm	6 pcs	165.000 hrs	105.000 hrs	51.000 hrs

All values are measured at 230V (+/- 7%)

## LINEA DS-A 195 LV

**CRI97 3750LM**

### ITEM SPECIFICATIONS (PART A)

Description	18°		37°		60°		Type	mA	Vf
	Item code	UGR	Item code	UGR	Item code	UGR			
Linea DS-A LV 3750 Lm 3000K CRI97 No dim	130603XXFD02	18.7	130603XXFE02	18.2	130603XXFF02	21.2	Incl. PSU	1400	37,5
Linea DS-A LV 3750 Lm 3000K CRI97 1-10V & Push	130603XXNR02	18.7	130603XXNS02	18.2	130603XXNT02	21.2	Incl. PSU	1400	37,5
Linea DS-A LV 3750 Lm 3000K CRI97 Dali	130603XXPR02	18.7	130603XXPS02	18.2	130603XXPT02	21.2	Incl. PSU	1400	37,5

### ITEM SPECIFICATIONS (PART B)

Description	W	Lm	Lm/W	CRI (typ.)	Pf	Ripple	Inrush current	B-16A Fuse	Safety class	Energy class
Linea DS-A LV 3750 Lm 3000K CRI97 No dim	57,2	3750	66	97	0.95	<3%	10A 200µS	30 pcs	II	A+
Linea DS-A LV 3750 Lm 3000K CRI97 1-10V & Push	57,2	3750	66	97	0.95	<3%	10A 200µS	30 pcs	I	A+
Linea DS-A LV 3750 Lm 3000K CRI97 Dali	57,2	3750	66	97	0.95	<3%	10A 200µS	30 pcs	I	A+

### ITEM SPECIFICATIONS (PART C)

Description	Weight	Dimensions single carton	Quantity per carton	Expected lifespan (25°C)		
				L70B50	L80B50	L90B50
Linea DS-A LV 3750 Lm 3000K CRI97	2094 gr	210x210x140 mm	6 pcs	165.000 hrs	105.000 hrs	51.000 hrs

All values are measured at 230V (+/- 7%)

## NEW STANDARDS REQUIRE NEW LEDS

TM-30 (new color norm): The Illuminating Engineering Society (IES) has published a new Technical Memorandum – TM-30-15 entitled “IES Method for Evaluating Light Source Color Rendition” – that promises to supplant CRI as a color metric. TM-30 relies on separate fidelity and gamut metrics, as well as a set of color samples that is more representative of real-world objects, as opposed to the pastel samples that were primarily used for the baseline CRI metric that was sometimes called Ra. The new color metric is intended to fairly and accurately characterize both LED-based solid-state lighting (SSL) and legacy sources.



### Desaturated

CRI = 80 / R<sub>g</sub> = 92



### Red-Enhanced

CRI = 98 / R<sub>g</sub> = 103

## SPECIAL LEDS AVAILABLE

	CCT	CRI	R9	Rf	Rg	R15	TLCI	W	Lm/W	900 mA	1400 mA
<b>Standard CRI80</b>	3000K	82	5	81	93	75	66	13,8	101	3000 Lm	5000 Lm
<b>Standard CRI80</b>	4000K	82	5	81	93	74	66	13,8	109	3400 Lm	5700 Lm
<b>Standard CRI97</b>	3000K	97	96	95	103	100	97	13,8	91	2500 Lm	3750 Lm
<b>CRI97</b>	4000K	97	96	95	103	100	97	13,8	98	3950 Lm	3950 Lm
<b>CrispWhite</b>	3000K	90	61	87	102	89	83	13,8	57	3550 Lm	3550 Lm
<b>CrispColor</b>	2700K	94	96	93	106	95	93	13,8	57	3550 Lm	3550 Lm
<b>CrispColor</b>	3000K	91	93	91	103	96	96	13,8	60	3750 Lm	3750 Lm
<b>CrispColor</b>	3250K	93	95	90	101	96	97	13,8	63	3950 Lm	3950 Lm
<b>CrispColor</b>	3500K	95	96	91	102	95	96	13,8	64	4000 Lm	4000 Lm
<b>CrispColor</b>	4000K	95	96	90	101	95	96	13,8	76	4700 Lm	4700 Lm
<b>CrispColor</b>	5000K	95	96	88	99	94	95	13,8	62	3800 Lm	3800 Lm
<b>AtmoSphere</b>	2200K	92	55	90	99	87	88	13,8	57	3550 Lm	3550 Lm
<b>Bread &amp; Pastries</b>	2700K	92	54	89	96	86	91	13,8	56	3500 Lm	3500 Lm
<b>Produce</b>	3000K	91	93	91	103	96	96	13,8	53	3300 Lm	3300 Lm
<b>Red Meat</b>	1800K	82	81	77	119	95	60	13,8	37	2350 Lm	2350 Lm
<b>Marbled Meat</b>	3000K	63	32	78	115	46	72	13,8	34	2150 Lm	2150 Lm
<b>Fish</b>	6500K	96	96	89	98	94	96	13,8	60	3750 Lm	3750 Lm