

FEATURES

- Bartenbach 'Dark Light' technology
- Low UGR levels combined with high light output

Bartenbach
lighting optics



SPRINGS

Standard with CS spring (concrete/gyproc). Also available as above with WS spring (gyproc/metal).



COLOURS

Available colours:



Nr	Housing	Inside ring
	RAL 9016	
XX=61	Matt white	Gold
XX=63	Matt white	Silver
XX=62	Matt white	Black
XX=65	Matt white	White



Nr	Housing	Inside ring
	RAL 9005	
XX=71	Matt black	Gold
XX=74	Matt black	Silver
XX=72	Matt black	Black
XX=76	Matt black	White

Strada 35

Fixed

SPECIFICATIONS

Beam angle (FWHM)	40° (65° FWTM)
Fixture material	Housing: Die cast aluminium / Reflector glass: Polycarbonate
Environment	Indoor
IK rate	IK03
Operating temperature (Ta)	-20°C / +45°C
Safety marks	EN60598 / EN62031 / EN62471
EMC compliance	EN55015
Colour consistency (SDCM)	MacAdam step 3
Warranty	7 years * (within the European Union and the countries of the Free Trade Association for products delivered after 1 May 2015)
Energy class	A

This luminaire contains built-in LED lamps. There are no exchangeable parts inside the luminaire. EU 874/2012



Only when the product is installed in a closed ceiling it may be exposed to water splashes, and only on its front side.

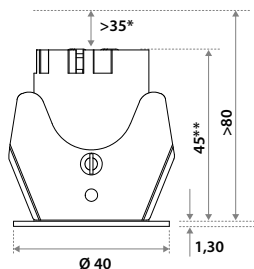
IP20

IP44

STRADA 35 VARIATIONS

Strada 35 LV	100-240V	incl. power supply	page 3
Strada 35 LV-C	500mA	to be connected to a central power supply	page 4

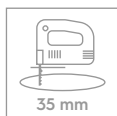
DIMENSIONS



* This distance is necessary because of the height of the connection box (80 mm). For purely heat reasons just 5 mm is sufficient.

** For WS springs this dimension is 60 mm

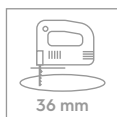
HOLE SIZE



Using CS (concrete) springs (concrete/gyproc)

For 5-80 mm ceiling thickness.

Recess depth 80 mm (incl. 5mm space for air ventilation).



Using WS (wire) springs (gyproc/metal)

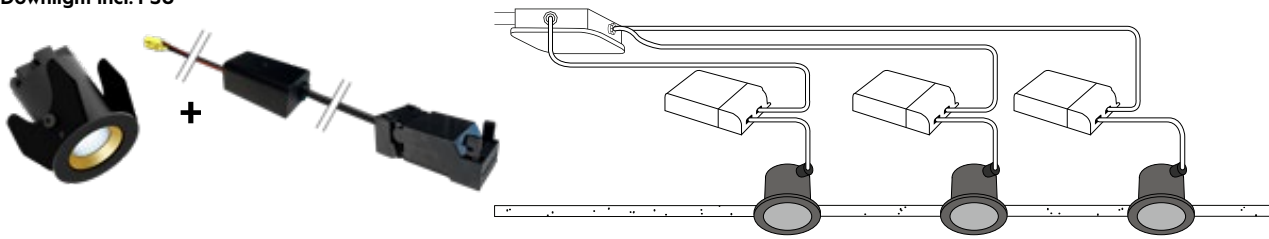
For 1-50 mm ceiling thickness.

Recess depth 80 mm (incl. 5mm space for air ventilation).

STRADA 35 (dimnable - incl. individual power supply)

100-240V

Downlight incl. PSU



ITEM SPECIFICATIONS (PART A)

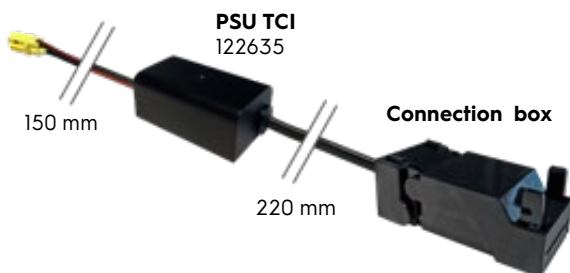
Description	Item code CS	Item code WS	Input	W	Lm	Lm/W	CRI (typ.)	UGR	Pf	Ripple	Inrush current	B-16A Fuse
Strada 35 LV 475 Lm 2700K No dim	851903XX0102	851903XX1A02	100-240V	6,6	475	72	82	15.0	0.6	<3%	20A 170µS	50 pcs
Strada 35 LV 500 Lm 3000K No dim	851903XX7202	851903XX2A02	100-240V	6,6	500	76	82	15.2	0.6	<3%	20A 170µS	50 pcs
Strada 35 LV 525 Lm 4000K No dim	851903XX0202	851903XX3A02	100-240V	6,6	525	80	82	15.4	0.6	<3%	20A 170µS	50 pcs

ITEM SPECIFICATIONS (PART B)

Description	Safety class	Energy class	Weight	Dimensions single carton	Quantity per pallet	Expected lifespan (25°C)		
						L70B50	L80B50	L90B50
Strada 35 LV	II	A	172 gr	105x105x61 mm	42 pcs	259.260 hrs	156.636 hrs	65.836 hrs

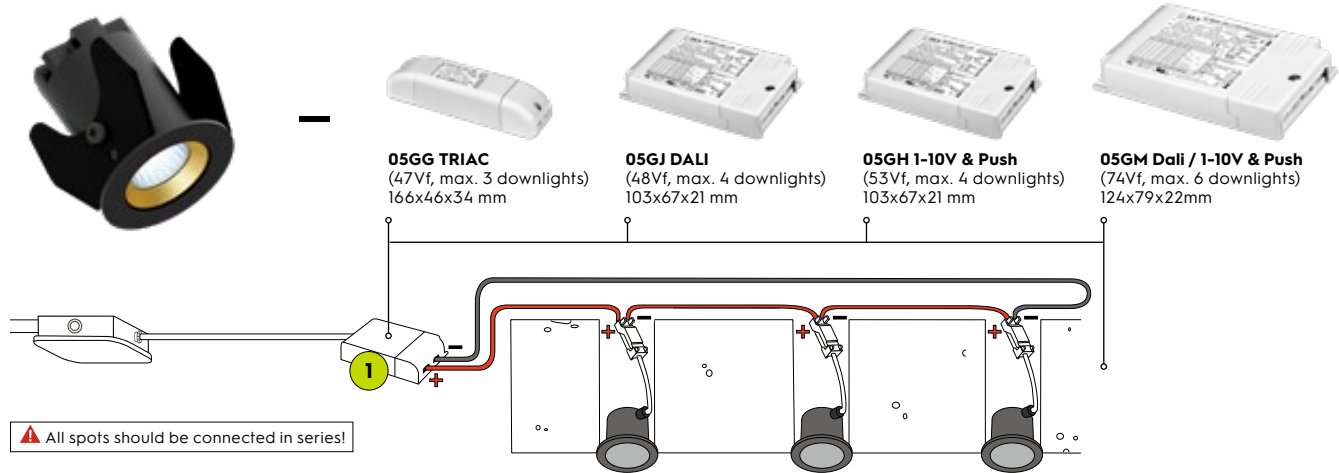
All values are measured at 230V (+/- 7%). Available from Q3 2020.

INCL. PSU NO DIM (100-240V)



STRADA 35 (dimmable - excl. central power supply)

500 mA



ITEM SPECIFICATIONS (PART A)

Description	Item code CS	Item code WS	Input	Vf	W	Lm	Lm/W	CRI (typ.)	UGR	Pf	Ripple	Inrush current	B-16A Fuse
Strada 35 LV-C 500mA 475 Lm 2700K Dim	851903XX01E2	851903XX1AE2	500mA	11,9	5,7	475	83	82	15.0	x	x	x	x
Strada 35 LV-C 500mA 500 Lm 3000K Dim	851903XX72E2	851903XX2AE2	500mA	11,9	5,7	500	88	82	15.2	x	x	x	x
Strada 35 LV-C 500mA 525 Lm 4000K Dim	851903XX02E2	851903XX3AE2	500mA	11,9	5,7	525	92	82	15.4	x	x	x	x

ITEM SPECIFICATIONS (PART B)

Description	Safety class	Energy class	Weight	Dimensions single carton	Quantity per pallet	Expected lifespan (25°C)		
						L70B50	L80B50	L90B50
Strada 35 LV-C 500mA	III	A	150 gr	105x105x61 mm	42 pcs	60.500 hrs	43.000 hrs	26.000 hrs

ITEM SPECIFICATIONS (PART A)

Description	Item code	Input	Watt	Current	Efficiency	Pf	Ripple	Weight	Inrush current	B-16A Fuse
PSU 32W 500mA Triac (1)	05GG03MLME00	220-240V	32W (47Vf)	500mA	85%	0.97	<3%	138 gr	5A 50µS	50 pcs
PSU 32W 500mA Dali (1)	05GJ03MLME00	220-240V	32W (48Vf)	500mA	87%	0.98	<3%	138 gr	5A 50µS	50 pcs
PSU 32W 500mA 1-10V & Push (1)	05GH03MLME00	220-240V	32W (53Vf)	500mA	90%	0.95	<3%	138 gr	5A 50µS	50 pcs
PSU 50W 500mA Dali / 1-10V & Push (1)	05GM03MLME00	220-240V	50W (74Vf)	500mA	89%	0.95	<3%	218 gr	20A 400µS	50 pcs

All values are measured at 230V (+/- 7%). Available from Q3 2020.

INCLUDING CONNECTION BOX

For installation to a central power supply.

